

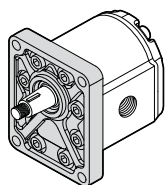
MOTORI AD INGRANAGGI GAMMA PRODOTTO
GEAR MOTORS PRODUCT RANGE

| GRUPPO GROUP 3GM | CILINDRATA DISPLACEMENT | | VELOCITÀ MAX MAX SPEED | PORTATA MAX MAX FLOW | | VELOCITÀ MIN MIN SPEED | PORTATA MIN MIN FLOW | | RENDIMENTO VOLUMETRICO MIN. MIN. VOLUMETRIC EFFICIENCY |
|-------------------------------|----------------------------|----------------------|---------------------------|-------------------------|---------|---------------------------|-------------------------|---------|---|
| | cm ³ /giro | in ³ /rev | giri/min - rpm | l/min | Gal/min | giri/min - rpm | l/min | Gal/min | % |
| 3GM 190 | 19.3 | 1.2 | 3500 | 67.6 | 17.84 | 700 | 12.8 | 3.39 | 95* |
| 3GM 230 | 23.0 | 1.4 | 3500 | 80.3 | 21.22 | 700 | 15.5 | 4.03 | 95* |
| 3GM 300 | 30.2 | 1.8 | 3300 | 99.7 | 26.33 | 700 | 20.1 | 5.31 | 95* |
| 3GM 340 | 33.8 | 2.1 | 3300 | 111.6 | 29.49 | 700 | 22.5 | 5.94 | 95* |
| 3GM 370 | 37.5 | 2.3 | 3300 | 123.6 | 32.66 | 700 | 24.9 | 6.58 | 95* |
| 3GM 440 | 44.6 | 2.7 | 3000 | 133.8 | 35.35 | 700 | 29.7 | 7.84 | 95* |
| 3GM 530 | 53.0 | 3.2 | 3000 | 159.1 | 42.04 | 700 | 35.3 | 9.32 | 95* |
| 3GM 620 | 62.7 | 3.8 | 2500 | 156.8 | 41.41 | 700 | 41.7 | 11.01 | 95* |
| 3GM 700 | 70.5 | 4.3 | 2500 | 176.3 | 46.58 | 700 | 46.9 | 12.39 | 95* |
| 3GM 770 | 77.2 | 4.7 | 2200 | 169.8 | 44.84 | 700 | 51.3 | 13.56 | 95* |

* = Valori rilevati in fase di collaudo a 1500 giri/min. Value collected during the testing at 1500 rpm.

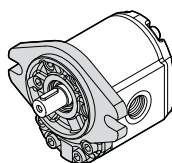
FLANGE - FLANGES

EUR



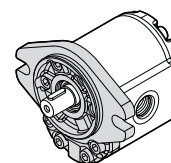
pagina/page 140

SAEB



pagina/page 141

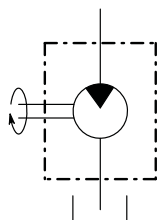
SAEBOR



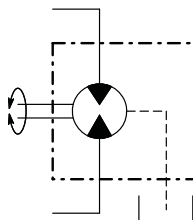
pagina/page 141

VERSIONI DISPONIBILI • AVAILABLE VERSIONS

Motore unidirezionale (D-S)
Unidirectional motor (D-S)



Motore reversibile con drenaggio esterno (R)
Reversible motor with external drain (R)



Motore reversibile con drenaggio interno (X)
Reversible motor with internal drain (X)

