



DAB

Pompa ad Ingranaggi Gear Pump

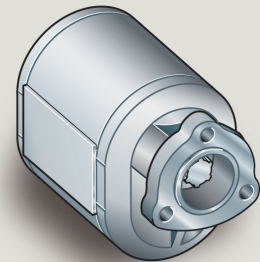
CODICE DI ORDINAZIONE / ORDERING CODE

200 **DAB** 2 10 **D** 0
 | | | | |
 TIPO/TYPE GRUPPO POMPA/PUMP GROUP CILINDRATA/DISPLACEMENT ROTAZIONE/ROTATION
 D = DESTRO/CLOCKWISE
 S = SINISTRO/ANTICLOCKWISE
 POMPA AD INGRANAGGI/GEAR PUMP

DIN
5 4 8 2

DAB 2 10
DAB 2 15
DAB 2 25
DAB 2 36

DAB 3 25
DAB 3 36
DAB 3 46
DAB 3 55



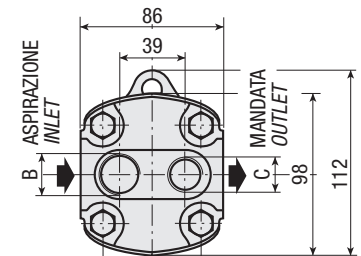
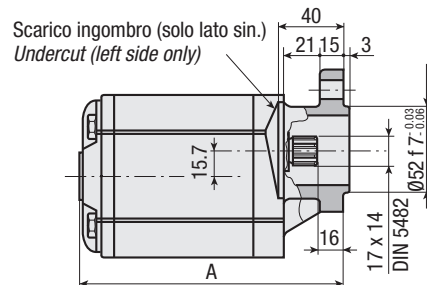
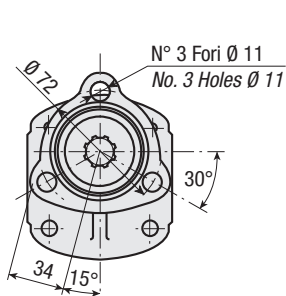
CARATTERISTICHE E DATI TECNICI / SPECIFICATIONS AND TECHNICAL DATA

TIPO TYPE	CODICE CODE	CILINDRATA DISPLACEMENT cm ³ /rev.	A mm	B ASPIRAZIONE INLET	C MANDATA OUTLET	PESO WEIGHT kg
DAB 2 10	200DAB210 D S 0	10	139	3/4" G	1/2" G	2.7
DAB 2 15	200DAB215 D S 0	15	148	3/4" G	1/2" G	3.0
DAB 2 25	200DAB225 D S 0	25	164.5	3/4" G	1/2" G	3.2
DAB 2 36	200DAB236 D S 0	35	181.5	3/4" G	1/2" G	3.7
DAB 3 25	200DAB325 D S 0	25	160.5	1" G	3/4" G	4.1
DAB 3 36	200DAB336 D S 0	36	171	1" G	3/4" G	5.4
DAB 3 46	200DAB346 D S 0	46	180	1" G	3/4" G	5.8
DAB 3 55	200DAB355 D S 0	55	188.5	1" G	3/4" G	6.2

**KIT RASAMENTI
THRUST PLATES KIT
COD. 2D441215000**

**KIT GUARNIZIONI COMPLETO
COMPLETE SEALS KIT
COD. 2D551215000**

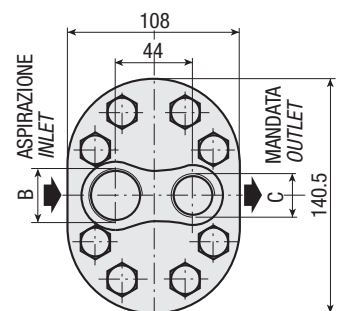
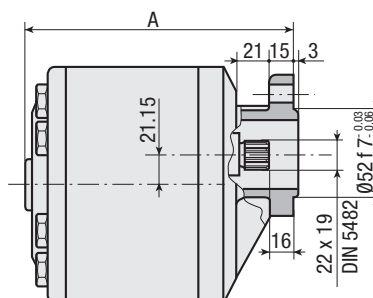
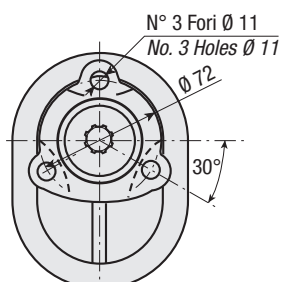
DAB 2



**KIT RASAMENTI
THRUST PLATES KIT
COD. 2D441325000**

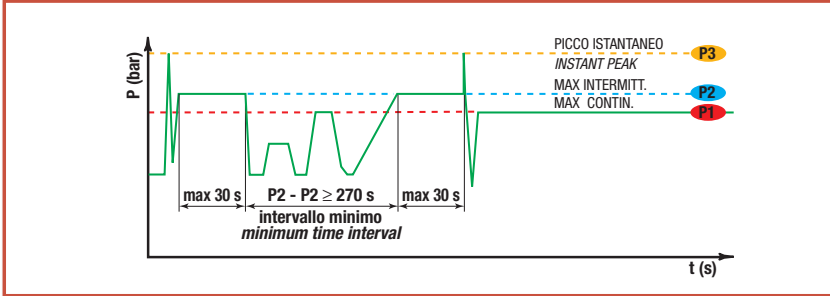
**KIT GUARNIZIONI COMPLETO
COMPLETE SEALS KIT
COD. 2D551325000**

DAB 3



DATI TECNICI / TECHNICAL DATA

ESEMPIO CICLI LAVORO / EXAMPLE OF WORKING CYCLES

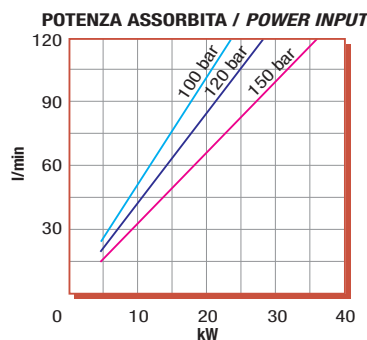
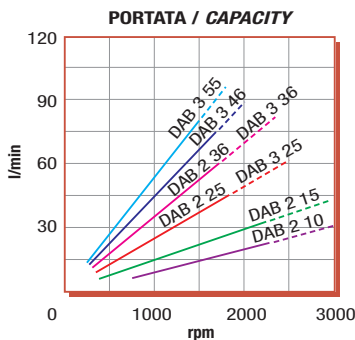


Pressione d'aspirazione: Inlet pressure:	0.7 ÷ 1.5 bar (assoluti/absolute)
Campo viscosità lavoro: Operating viscosity range:	12 ÷ 100 cSt
Temperatura fluido °C (t): Fluid temperature °C (t):	-10° + 80° C

Pressione Lavoro Working Press. P2	Contaminazione / Contamination		Filtro / Filter βx = 75
	NAS 1638	ISO 4406	
≤ 200 bar	12	21/18	40 μm

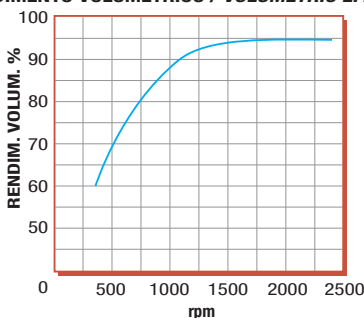
◀ **FILTRAZIONE CONSIGLIATA (ritorno o mandata)**
RECOMMENDED FILTERING (return or outlet)

TIPO / TYPE				DAB 2 10	DAB 2 15	DAB 2 25	DAB 2 36	DAB 3 25	DAB 3 36	DAB 3 46	DAB 3 55
Cilindrata Displacement	Vg	cm ³ /n cm ³ /rev.		10	15	25	35	25	36	46	55
Pressione massima continua Max continuous operating pressure	P1	bar		180	140	120	100	130	130	120	120
Pressione massima intermittente Max intermitt. operat. press. (max 30 s)	P2		200	160	150	120	150	150	140	140	
Pressione massima di picco Max peak pressure (≤ 0.1 s)	P3		270	210	180	150	200	200	180	180	
Velocità massima intermittente Max intermittent speed (P ≤ 20 bar)	n3	n/min r.p.m.		3000	3000	2500	2100	2500	2300	2000	1800
Velocità massima continua Max continuous speed (≤ P1)	n1		1500	1500	1500	1400	1500	1500	1500	1300	
Velocità minima intermittente Min intermittent speed (≤ P2 x 0.5) (max 30 s)	n4		800	650	650	600	600	550	550		

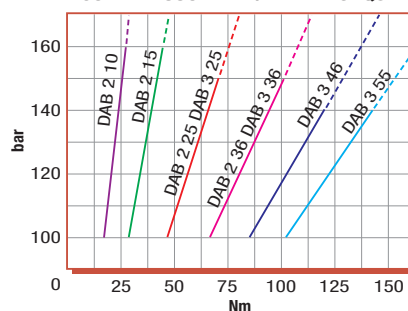


DIAGRAMMI / DIAGRAMS

RENDIMENTO VOLUMETRICO / VOLUMETRIC EFFICIENCY



COPPIA ASSORBITA / DRIVE TORQUE



RILIEVI ESEGUITI CON OLIO
ISO VG 46 A 50° C (√= 30 cSt)
THE ABOVE SPECIFICATIONS
REFER TO OIL TYPE ISO
VG 46 AT 50° C (√=30 cSt)