

**MPM (MM)**

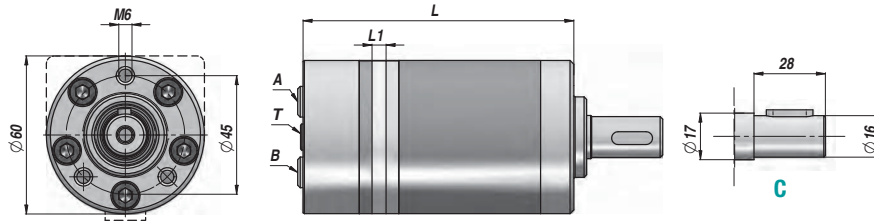
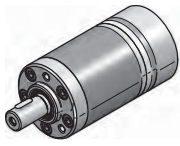


MOTORE "M+S HYDRAULIC"  
"M+S HYDRAULIC" MOTOR

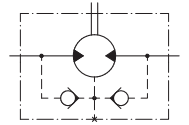
ALBERO CILINDRICO Ø16  
PARALLEL SHAFT Ø16

SENZA FLANGIA  
SENZA FLANGIA

Standard: CONNESSIONI POSTERIORI - REAR PORTS



VALVOLE UNIDIREZIONALI  
INCORPORATE  
BUILT-IN CHECK VALVES



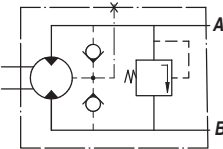
PREDISPOSTO PER IL DRENAGGIO  
MACHINED FOR DRAIN CONNECTION

Codice Code	Tipo Type	cm <sup>3</sup> /giro cm <sup>3</sup> /rev	n. Max giri/min rpm	M Max daNm	Q MAX l/min	P MAX bar			A - B	T	L	L1	kg
						Caduta Drop Δp	Ingresso Inlet	Ritorno Return					
<b>LAVORO CONTINUO - CONTINUOUS WORK</b>													
MPM008NC16	MPM 8 C	8.2	1950	1.1	16	105.0	140	140 *	3/8"	1/8"	104.0	3.5	1,90
MPM012NC16	MPM 12 C	12.9	1550	1.6	20	105.0	140	140 *			106.0	5.5	2,00
MPM020NC16	MPM 20 C	20.0	1000	2.5	20	105.0	140	140 *			109.0	8.5	2,10
MPM032NC16	MPM 32 C	31.8	630	4.0	20	105.0	140	140 *			114.0	13.5	2,20
MPM040NC16	MPM 40 C	40.0	500	4.1	20	82.5	140	140 *			117.5	17.0	2,30
MPM050NC16	MPM 50 C	50.0	400	4.5	20	70.0	140	140 *			121.5	21.0	2,50

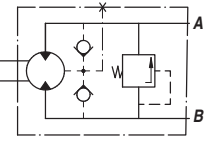
\* = CON DRENAGGIO - WITH DRAIN

OPTION

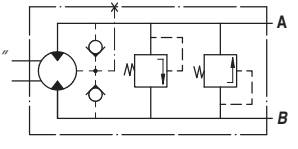
MPM-P.../ R  
VMP SULLA LINEA "A"  
RELIEF VALVE ON LINE "A"



MPM-P.../ L  
VMP SULLA LINEA "B"  
RELIEF VALVE ON LINE "B"

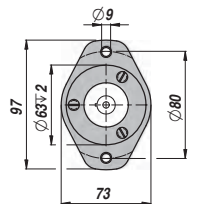


MPM-D...  
VMP SULLE LINEE "A/B"  
RELIEF VALVE ON LINES "A/B"



OPTION	OPTION	OPTION	PRESSIONE MAX. AL RITORNO SENZA DRENAGGIO MAX. RETURN PRESSURE WITHOUT DRAIN
<p>CK</p>	<p>F: (Oval Mount)</p>	<p>S: CONNESSIONI LATERALI SIDE PORTS</p>	<p>ΔP bar vs rpm graph showing continuous (solid line) and intermittent (dashed line) operations.</p>

FLANGE KIT  
Code: MF48443014



CON N.3 VITI M6x14"  
WITH No.3 SCREWS M6x14"

CARICHI AMMESSI SULL'ALBERO  
PERMISSIBLE SHAFT LOADS

