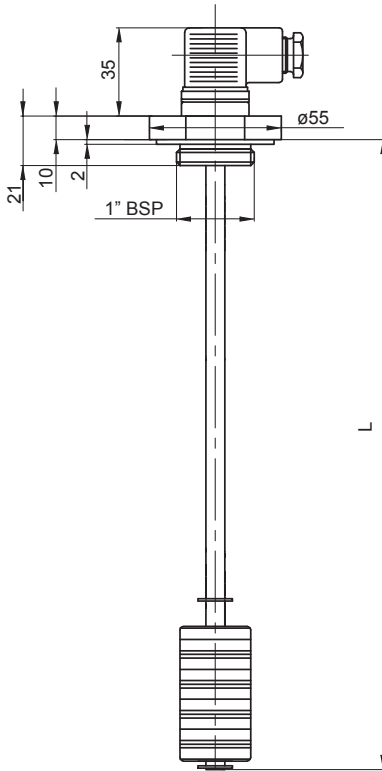
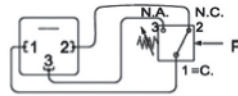


CLB

FLOAT SWITCHES



ELECTRICAL DATA



SPDT Reed switch
 Max load AC up to 48 V - 0,5 A
 Maxload DC up to 48 V - 0,5 A
 Connector DIN 43650
 Protection DIN 40050: IP 65

Electrical level indicators, an electrical signal is activated when the minimum (or maximum) oil level is reached.

The REED switch has SPDT contacts.

N.B. the float switch must be mounted at min 50 mm from ferrous walls.

Max oil viscosity 150 cSt.

MATERIALS

Tank connection:
Anodized aluminium

Rod:
Stainless steel

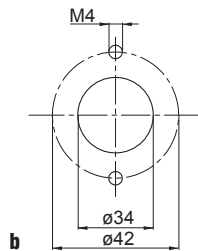
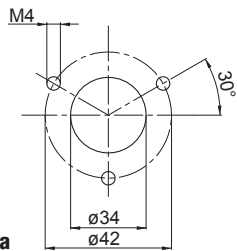
Float:
Polyamide

COMPATIBILITY

Full with fluids HH-HL-HM-HV-HTG (according to ISO 6743/4). For fluids different than the above mentioned, please contact our Sales Department.

WORKING TEMPERATURE

From -10°C to 90°C



Tank mounting pattern possibilities:

- 1" BSP thread
- nr. 3 holes (a)
- nr. 2 holes (b)

DIMENSIONS

	L
CLB15	150
CLB20	200
CLB25	250
CLB35	350
CLB40	400
CLB50	500

ORDERING AND OPTION CHART

C TYPE							
C = ACCESSORY PRODUCT		C	C	C	C	C	C
L B	FAMILY, SIZE & LENGTH	15	20	25	35	40	50
U	CONNECTION TYPE						
U	U = universal, BSP+2-3 holes flange	U	U	U	U	U	U
N	SEALS						
N	N = NBR Nitrile	N	N	N	N	N	N
W	ACCESSORIES						
W	W = without	W	W	W	W	W	W



Is this datasheet the latest release? Please check on our website.

